

## **COURSE GOAL AND OBJECTIVES:**

### **COURSE GOAL:**

TO ENRICH THE STUDENT'S AWARENESS AND APPRECIATION OF ANTHROPOLOGY, AND THE ORIGINS, DEVELOPMENT AND NATURE OF HUMANS AND THEIR CULTURE(S).

### **COURSE OBJECTIVES:**

1. TO EXPOSE THE STUDENT TO THE PERSPECTIVES AND MATERIALS OF THE MAJOR COMPONENT SUBFIELDS OF ANTHROPOLOGY.
2. DEVELOP APPRECIATION, UNDERSTANDING AND SENSITIVITY TO THE CONCEPT OF CULTURE WHICH MAKES HUMANS BOTH ALIKE AND DIFFERENT AT THE SAME TIME.
3. TO MAKE STUDENTS MORE AWARE OF THE CULTURAL FOUNDATION FOR HUMAN BEHAVIOR, ESPECIALLY THEIR OWN.

## COURSE SYLLABUS AND ASSIGNMENTS

### REQUIRED READING:

1. William A. Haviland, Anthropology
2. Richard B. Lee, The Dobe Ju/Hoansi

### COURSE SCHEDULE:

<u>Date</u>	<u>Lecture Topic</u>	<u>Outline Page</u>	<u>Book Chapter</u>
<u>CONCEPTS IN ANTHROPOLOGY</u>			
1/18,20	Introduction to Anthropology	6	1
1/25	Concepts of Culture and Cultural Relativism	7	14
1/27	Concept of Evolution	7,10,11,12	2
<u>PHYSICAL ANTHROPOLOGY AND ARCHAEOLOGY</u>			
2/1,3	Field Methods	8,9	4
2/8	<u>EXAM</u>		
2/10,15	Primates	13-16	3,5
2/17,22,24,3/1	Human Evolution and Human Variation	17-21	6-10,13
3/3	<u>EXAM</u>		
3/8	Neolithic	22	11
3/10,22	State Systems	23	12
<u>LINGUISTICS AND SOCIOCULTURAL ANTHROPOLOGY</u>			
3/24,29	Overview of Linguistic Fields	24	15
3/31	<u>EXAM</u>		
4/5,7	"The Hunters"		
4/12	<u>JU/HOANSI ASSIGNMENT DUE</u>		
4/14,19	Hunter-Gatherers	25	Lee
4/21	"N!ai: The Story of a !Kung Woman"		



## PROCEDURES AND POLICIES

**GRADING PROCEDURE:** There will be four major exams and one book review.

Exam I	=	100 pts
Exam II	=	100 pts
Exam III	=	100 pts
Exam IV	=	100 pts
Ju/huansi Assignment	=	50 pts
<hr/>		
TOTAL	=	450 pts

450-405	=	A
404-360	=	B
359-315	=	C
314-270	=	D
269 and below	=	F

**ATTENDANCE POLICY:** Attendance is mandatory. Students with five unexcused absences will have their final grade lowered one letter grade.

**OTHER INFORMATION:**

Professor's Office: Chilton 330M

Office Hours: Tuesday and Thursday, 12:30 – 1:30 PM

Tel: 940/565-3443

e-mail: Jordan@unt.edu

Students will be notified in class of any changes in the information given above.

Anthropology does not discriminate on the basis of an individual's disability as required by the Americans with Disabilities Act. The program provides academic adjustments and aids to individuals with disabilities in its programs and activities.

## **LECTURE STUDY GUIDE**

## **INTRODUCTION: UNDERLYING CONCEPTS IN ANTHROPOLOGY**

### I. INTRODUCTION

CH.1

ANTHROPOLOGY means "THE STUDY OF MAN"

ANTHROPOLOGY is a SCIENCE

GOAL OF ANTHROPOLOGY: TO UNDERSTAND WHAT IN HUMAN BEHAVIOR IS CHARACTERISTIC OF ALL HUMANS AND WHAT IN HUMAN BEHAVIOR IS CULTURALLY SPECIFIC.

### II. FIVE SUBFIELDS OF ANTHROPOLOGY

#### A. PHYSICAL ANTHROPOLOGY

1. HUMAN EVOLUTION

2. HUMAN VARIATION

#### B. ARCHAEOLOGY

1. PREHISTORIC

2. HISTORIC

#### C. LINGUISTICS

1. DESCRIPTIVE

2. HISTORICAL

3. ETHNOLINGUISTICS

#### D. SOCIOCULTURAL ANTHROPOLOGY

#### E. APPLIED ANTHROPOLOGY

BASIC CONCEPTS FOR ALL SUBFIELDS

**CULTURE: AN INTEGRATED SYSTEM OF LEARNED PATTERNS OF BEHAVIOR, IDEAS, AND PRODUCTS CHARACTERISTIC OF A SOCIETY.**

**ETHNOCENTRISM: THE BELIEF THAT ONE'S OWN CULTURE IS SUPERIOR IN EVERY WAY TO ALL OTHERS.**

**CULTURAL RELATIVISM: THE THESIS THAT BECAUSE CULTURES ARE UNIQUE, THEY CAN BE EVALUATED ONLY ACCORDING TO THEIR OWN STANDARDS AND VALUES.**

**EVOLUTION: PROCESS BY WHICH CHARACTERISTICS OF A GROUP OF ORGANISMS CHANGE OVER TIME.**

**ADAPTATION: A PROCESS BY WHICH ORGANISMS ACHIEVE A BENEFICIAL ADJUSTMENT TO AN AVAILABLE ENVIRONMENT, AND THE RESULTS OF THAT PROCESS, THE CHARACTERISTICS OF ORGANISMS THAT FIT THEM TO THE PARTICULAR SET OF CONDITIONS OF THE ENVIRONMENT IN WHICH THEY ARE GENERALLY FOUND.**

# PHYSICAL ANTHROPOLOGY AND ARCHAEOLOGY

## ARCHAEOLOGY METHODS

CH. 4

### 1. FINDING THE SITE

ACCIDENTAL DISCOVERIES

DELIBERATE ARCHAEOLOGICAL SURVEY

REMOTE SENSING

AERIAL PHOTOGRAPHY

SATELLITE IMAGERY

MAPPING: GEOGRAPHIC INFORMATION SYSTEMS

ETHNOHISTORICAL DATA

### 2. ASSESSING SITES

SURFACE COLLECTION

SUBSURFACE DETECTION METHODS

DETERMINING TYPE OF EXCAVATION

### 3. EXCAVATING THE SITE: THERE ARE NO SECOND CHANCES

ARTIFACTS

FOSSILS

IN SITU

STRATIGRAPHY

GRID SYSTEM

FLOTATION

### 4. ANALYZING THE SITE

DATING TECHNIQUES

RELATIVE DATING:

STRATIGRAPHY

FLUORINE TEST

PALYNOLOGY

PALEONTOLOGY

CHRONOMETRIC DATING:

RADIOCARBON ANALYSIS

DENDROCHRONOLOGY

POTASSIUM-ARGON ANALYSIS

AMINO ACID RACEMIZATION DATING

THERMOLUMINESCENCE

POPULATION: IN BIOLOGY, A GROUP OF SIMILAR INDIVIDUALS THAT CAN AND DO INTERBREED.

GENE POOL: THE TOTAL GENES OF A POPULATION.

FORCES THAT INCREASE GENE POOL:

1. MUTATION: CHEMICAL ALTERATION OF A GENE THAT PRODUCES A NEW ALLELE.
2. GENE FLOW: THE INTRODUCTION OF GENES FROM THE GENE POOL OF ONE POPULATION INTO THAT OF ANOTHER.

FORCES THAT DECREASE VARIABILITY IN THE GENE POOL:

1. GENETIC DRIFT: CHANCE FLUCTUATIONS OF ALLELE FREQUENCIES IN THE GENE POOL OF A POPULATION.
2. NATURAL SELECTION: THE EVOLUTIONARY PROCESS THROUGH WHICH FACTORS IN THE ENVIRONMENT EXERT PRESSURE THAT FAVORS SOME INDIVIDUALS OVER OTHERS TO PRODUCE THE NEXT GENERATION.

## TYPES OF EVOLUTION

CH. 2

DIVERGENT EVOLUTION: PROCESS THROUGH WHICH A SINGLE ANCESTRAL POPULATION GIVES RISE TO TWO OR MORE DIVERSE DESCENDANT POPULATIONS.

LINEAR EVOLUTION: PROCESS THROUGH WHICH OLD SPECIES EVOLVE INTO NEW ONES THROUGH GRADUAL CUMULATIVE CHANGES.

CONVERGENT EVOLUTION: PROCESS THROUGH WHICH PHYLOGENETICALLY UNRELATED ORGANISMS DEVELOP GREATER SIMILARITIES.

GENES: PORTIONS OF DNA MOLECULES THAT DIRECT THE DEVELOPMENT OF OBSERVABLE OR IDENTIFIABLE TRAITS.

ALLELES: ALTERNATE FORMS OF A SINGLE GENE.

HOMOZYGOUS: DESCRIBING A CHROMOSOME PAIR THAT BEARS IDENTICAL ALLELES FOR A SINGLE GENE.

HETEROZYGOUS: DESCRIBING A CHROMOSOME PAIR THAT BEARS DIFFERENT ALLELES FOR A SINGLE GENE.

PHENOTYPE: THE PHYSICAL APPEARANCE OF AN ORGANISM WHICH MAY OR MAY NOT REFLECT ITS GENOTYPE BECAUSE THE LATTER MAY INCLUDE RECESSIVE ALLELES.

GENOTYPE: THE ACTUAL GENETIC COMPOSITION OF AN ORGANISM.

DOMINANT ALLELES ARE REFLECTED IN THE PHENOTYPE; RECESSIVE ALLELES ARE NOT REFLECTED IN THE PHENOTYPE BUT ARE PRESENT IN THE GENOTYPE.

ETHOLOGY

CH. 3

(THE STUDY OF ANIMAL BEHAVIOR)

CHARACTERISTICS ONCE CONSIDERED TO BE UNIQUE TO HUMANS:

1. LANGUAGE

2. LEARNED BEHAVIOR PASSED ON TO FUTURE GENERATIONS

3. TOOL MAKING

4. ABILITY TO REASON

CLASSIFICATION OF HUMANS

CH. 3 & 5

KINGDOM:	ANIMALIA
SUBKINGDOM:	METAZOA
PHYLUM:	CHORDATA
SUBPHYLUM:	VERTEBRATA
CLASS:	MAMMALIA
ORDER:	PRIMATES
SUBORDER:	ANTHROPOIDEA
INFRAORDER :	CATTARRHINI
SUPERFAMILY:	HOMINOID
FAMILY:	HOMINID
SUBFAMILY:	HOMININ
GENUS:	HOMO
SPECIES:	SAPIEN

THE PRIMATE ORDER

CH. 3 & 5

ORDER

PRIMATES

SUBORDER

ANTHROPOIDEA  
(HIGHER PRIMATES)

PROSIMII  
(LOWER PRIMATES)

INFRAORDER

CATARRHINI

PLATYRRHINI  
(NEW WORLD MONKEYS)

SUPERFAMILY

HOMINOIDEA  
(APES AND HUMANS)

CEROPITHECOIDEA  
(OLD WORLD MONKEYS)

FAMILY:

HOMINIDAE  
(HUMANS,  
NEAR  
HUMANS,  
BONOBOS,  
CHIMPANZEES,  
GORILLAS)

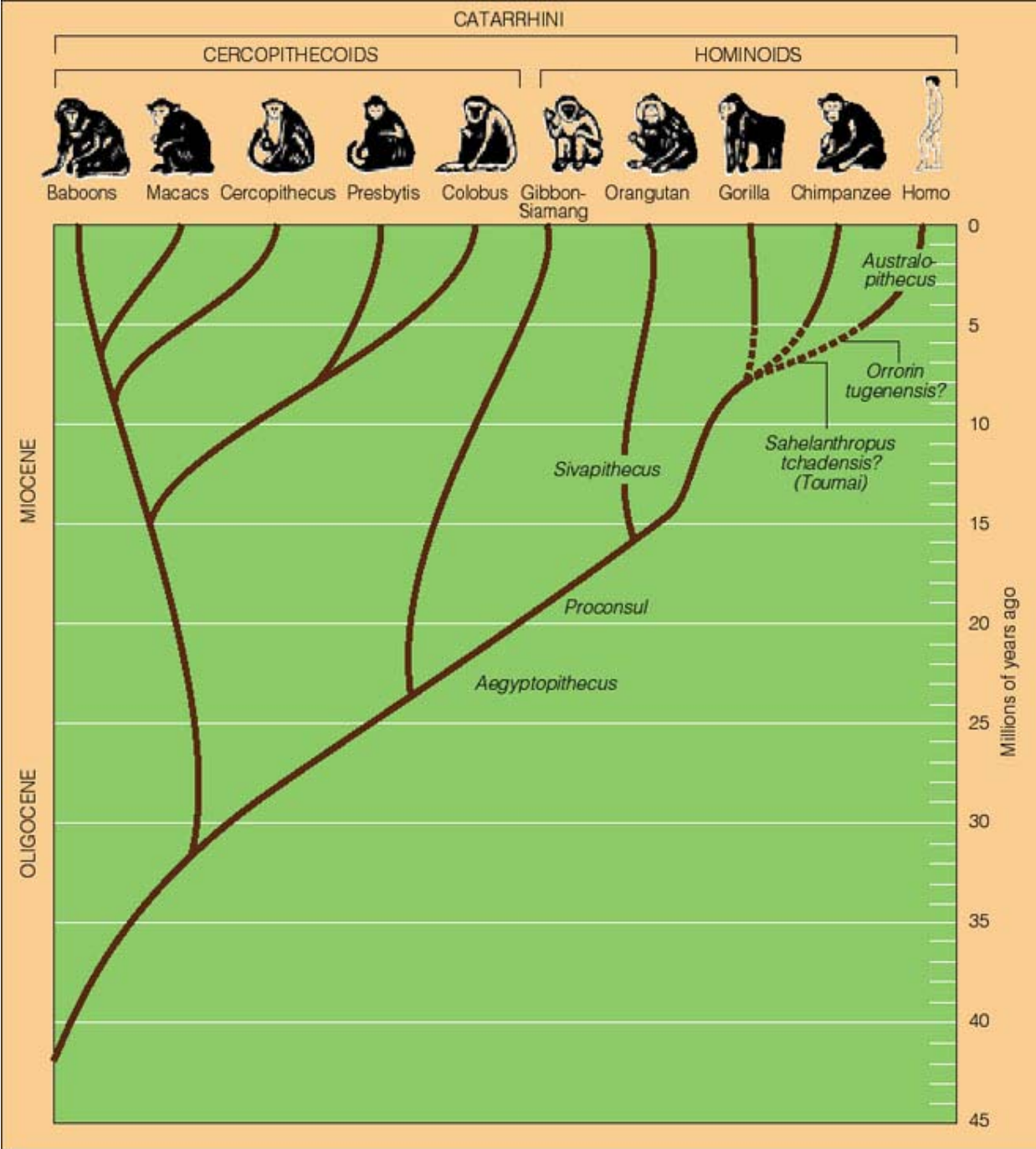
PONGIDAE  
(ASIAN GREAT  
APES:  
ORANGUTANS)

HYLOBATIDAE  
(SMALL APES:  
GIBBONS, SIAMANGS)

SUBFAMILY:

HOMININAE  
(HUMANS)

PANINAE  
(CHIMPS, BONOBOS,  
GORILLAS)



© 2005 Wadsworth - Thomson

## HOMININ EVOLUTION

CH. 6 -10

### **I. GENUS: ARDIPITHECUS (CH.6)**

ARDIPITHECUS RAMIDUS (AUSTRALOPITHECUS ARDIPITHECUS)

4.4 MILLION BP  
CRANIAL CAPACITY UNKNOWN  
ETHIOPIA

### **II. GENUS: AUSTRALOPITHECUS (CH. 6)**

AUSTRALOPITHECUS ANAMEMESIS

4.1 MILLION BP  
CRANIAL CAPACITY UNKNOWN  
KENYA

AUSTRALOPITHECUS AFARENSIS

4-3 MILLION BP  
CRANIAL CAPACITY LESS THAN 400 CC  
ETHIOPIA AND TANZANIA

AUSTRALOPITHECUS AFRICANUS

3 - 2 MILLION BP  
CRANIAL CAPACITY 450-500 CC  
SOUTH AFRICA

AUSTRALOPITHECUS GAHRI

2.5 MILLION BP  
CRANIAL CAPACITY 442 CC  
ETHIOPIA

AUSTRALOPITHECUS AETHIOPICUS

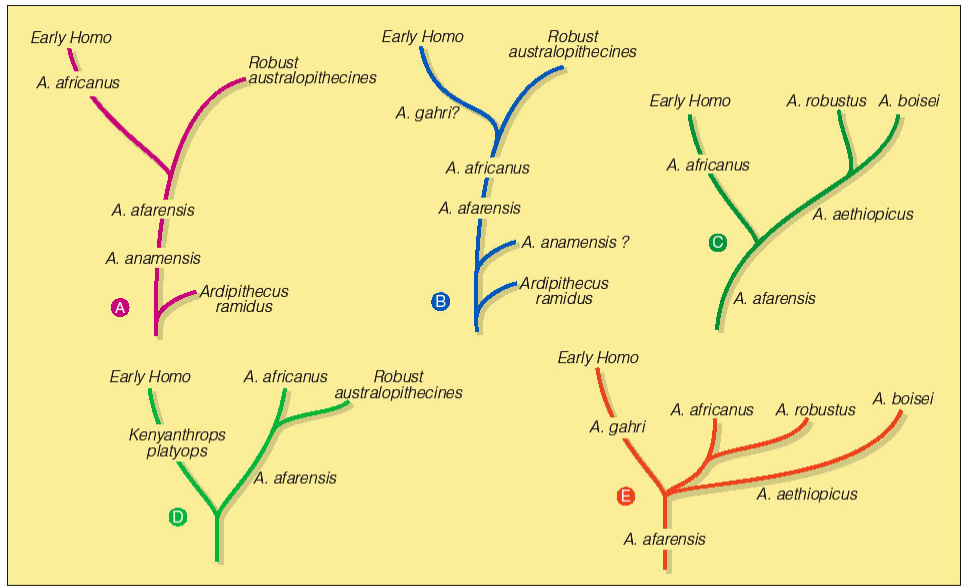
2.5 MILLION BP  
CRANIAL CAPACITY 500-530 CC  
KENYA

AUSTRALOPITHECUS ROBUSTUS

1.8-1 MILLION BP  
CRANIAL CAPACITY 530CC  
SOUTH AFRICA

AUSTRALOPITHECUS BOISEI

2.5 - 1.5 MILLION BP  
CRANIAL CAPACITY 500-550CC  
KENYA



© 2005 Thomson - Brooks/Cole

Fig. 6-11, p.159

### **III. GENUS: HOMO**

HOMO HABILIS (CH. 7)  
2.4 - 1.5 MILLION BP  
650 CC AVERAGE CRANIAL CAPACITY

HOMO ERECTUS (CH. 8)  
(INCLUDES HOMO ERGASTER, HOMO ANTECESSOR AND HOMO HEIDLEBERGENSIS)  
1.8 MILLION - 400,000 BP  
CRANIAL CAPACITY 800-1200 CC

HOMO SAPIEN NEANDERTAL (CH. 9)  
200,000-35,000 BP  
1470 CC CRANIAL CAPACITY

HOMO SAPIEN SAPIEN (CH. 10)  
35,000 - PRESENT  
CRANIAL CAPACITY 900-2000 CC  
(AVERAGE 1400 CC)

#### **IMPORTANT RECENT FINDS:**

SAHELANTHROPUS TCHADENSIS  
7-6 MILLION BP  
CHAD

HOMO FLORESIENSIS  
95,000-13,000BP  
3 FEET TALL

## ARCHAEOLOGY

CH. 7-10

### TOOL TRADITIONS:

#### OLDOWAN TOOL TRADITION (CH. 7)

ASSOCIATED WITH HOMO HABILIS  
PERCUSSION METHOD  
2 INCHES OF CUTTING EDGE FROM 1 POUND OF FLINT

#### ACHEULIAN TOOL TRADITION (CH. 8)

ASSOCIATED WITH HOMO ERECTUS  
BATON METHOD  
STRIKING PLATFORM  
LEVALLOISIAN TECHNIQUE  
8 INCHES OF CUTTING EDGE FROM 1 POUND OF FLINT

#### MOUSTERIAN TOOL TRADITION (CH. 9)

ASSOCIATED WITH HOMO SAPIEN NEANDERTHAL  
MUCH GREATER VARIETY OF TOOLS  
40 INCHES OF CUTTING EDGE FROM 1 POUND OF FLINT

#### UPPER PALEOLITHIC TRADITION (CH. 10)

ASSOCIATED WITH EARLY MODERN HOMO SAPIEN SAPIEN LIKE CRO MAGNON  
PRESSURE FLAKING  
120 INCHES OF CUTTING EDGE FORM 1 POUND OF FLINT

-----

#### CRO MAGNON (CH. 10)

(UPPER PALEOLITHIC HOMO SAPIEN SAPIEN IN EUROPE)

### ICE AGE ART:

CAVE PAINTINGS

VENUS FIGURES

RECORD KEEPING METHODS

## HUMAN VARIATION

CH. 13

THE STUDY OF THE PHYSICAL VARIABILITY IN MODERN HUMANS

POLYMORPHIC

POLYTYPIC

THE CONCEPT OF RACE

ANTHROPOLOGICALLY USELESS FOR UNDERSTANDING HUMAN VARIATION BECAUSE OF:

INTRARACIAL VARIATION

CLINAL VARIATION

NONCONFORMING GENE FREQUENCIES

HUMAN VARIATION AND ENVIRONMENTAL ADAPTATION  
EXAMPLES:

BLOOD TYPES

BODY SHAPE (BERGMANN=S RULE)

SKIN COLOR

MALARIA AND SICKLE CELL

LACTASE RETENTION AND LACTOSE INTOLERANCE

1. MESOLITHIC (MIDDLE STONE AGE) C 15,000BP  
GLACIERS RETREATED; ENVIRONMENT WARMED AND CHANGED

2. NEOLITHIC (NEW STONE AGE)

THE BEGINNINGS OF AGRICULTURE

18,000 BP WADI KUBBANIYA IN UPPER NILE VALLEY

11,000 BP NATUFIAN CULTURE IN NEAR EAST

3. HOW DID AGRICULTURE BEGIN?

PREADAPTATION: A BIOLOGICAL STRUCTURE, BEHAVIOR PATTERN OR ARTIFACT  
THAT APPEARS AT ONE PERIOD BUT HAS GREATER ADAPTIVE  
VALUE AT A LATER TIME.

4. WHY DID AGRICULTURE BEGIN?

5. EARLY CENTERS OF DOMESTICATION

NEAR EAST

CATAL HUYUK IN SOUTHERN TURKEY

ALI KOSH IN SOUTHWESTERN IRAN

SOUTHEAST ASIA

SPIRIT CAVE IN THAILAND

CHINA

HUANG-HO RIVER VALLEY

MEXICO

PERU

6. AGRICULTURAL VILLAGES WERE WIDESPREAD BY:

10,000BP IN THE NEAR EAST

6,000BP IN CHINA AND EUROPE

4,500BP IN THE ANDES

3,500BP IN MEXICO AND THE SOUTHWESTERN US

BY 5,500 BP, CITIES IN THE NEAR EAST

BY 4,500 BP, THE FIRST STATE (HARAPPAN) IN INDIA

BY 3,500 BP, FIRST CITIES IN CHINA

BY 2,000 BP, FIRST NEW WORLD STATES IN MEXICO AND PERU

CITY: CHARACTERIZED BY DENSE POPULATION AND SPECIALIZATION OF GOODS AND SERVICES

STATE: FORM OF SOCIOPOLITICAL ORGANIZATION  
CHARACTERIZED BY 1) PRESENCE OF SOCIAL CLASSES, 2) MONOPOLY ON PHYSICAL FORCE AND 3) BUREAUCRACY

LOCATIONS OF 6 EARLY STATE SYSTEMS

1. INDUS RIVER VALLEY IN INDIA
2. MESOPOTAMIA AND SOUTHWEST IRAN
3. EGYPT
4. NORTHERN CHINA
5. MESOAMERICAN
6. PERU

## LINGUISTICS AND SOCIOCULTURAL ANTHROPOLOGY

### I. DESCRIPTIVE LINGUISTICS

CH. 15

#### A. PHONOLOGY

PHONEMES

#### B. SYNTAX

MORPHOLOGY

MORPHEME

MORPHEMES MAY BE BOUND OR FREE

#### C. SEMANTICS

### II. HISTORICAL LINGUISTICS

GRIMM'S LAW: AS LANGUAGES CHANGE IN THEIR PRONUNCIATION OVER TIME, THE PRONUNCIATION SHIFTS APPLY NOT TO SINGLE WORDS IN ISOLATION BUT TO CATEGORIES OF SOUNDS IN PARTICULAR LOCATIONS WITHIN WORDS OR TYPES OF WORDS.

### III. ETHNOLINGUISTICS (LANGUAGE AND CULTURE)

SAPIR-WHORF HYPOTHESIS: LANGUAGE STRUCTURES REALITY

### IV. CHARACTERISTICS OF HUMAN LANGUAGE

A. DUALITY OF PATTERNING

B. SEMANTIC UNIVERSALITY

C. SEMANTIC PRODUCTIVITY

D. DISPLACEMENT

E. ARBITRARINESS

F. TRANSMISSION BY TRADITION

AN IN DEPTH LOOK AT ONE CULTURE

LEE BOOK

THE JU/HOANSI

A HUNTING AND GATHERING PEOPLE

DESCRIPTION OF ENVIRONMENT

DESCRIPTION OF PHYSICAL TYPE

DESCRIPTION OF CULTURE

1. SUBSISTENCE
2. SOCIAL ORGANIZATION
3. RELIGION
4. POLITICAL SYSTEM
5. ECONOMIC SYSTEM

WAYS IN WHICH JU/HOANSI CULTURE IS INTEGRATED:

WAYS IN WHICH JU/HOANSI CULTURE IS AN ADAPTATION TO THEIR ENVIRONMENT:

DESCRIPTION OF CULTURE CHANGE

GENERAL CHARACTERISTICS OF ALL HUNTERS AND GATHERERS  
(NOT JUST JU/HOANSI)

CULTURE CHANGE

CH. 26-27

TYPES OF CULTURE CHANGE:

1.SPONTANEOUS CULTURE CHANGE

2.ACCULTURATION

ONE OF THE PROCESSES OF CULTURE CHANGE: DIFFUSION

EXAMPLES OF CULTURE CHANGE:

THE YIR YIRONT OF AUSTRALIA

THE CARGO CULTS OF MELANESIA

GLOBALIZATION

ANTHROPOLOGY 1010.001

COURSE SYLLABUS AND STUDY GUIDE

SPRING 2005  
DR. ANN T. JORDAN