

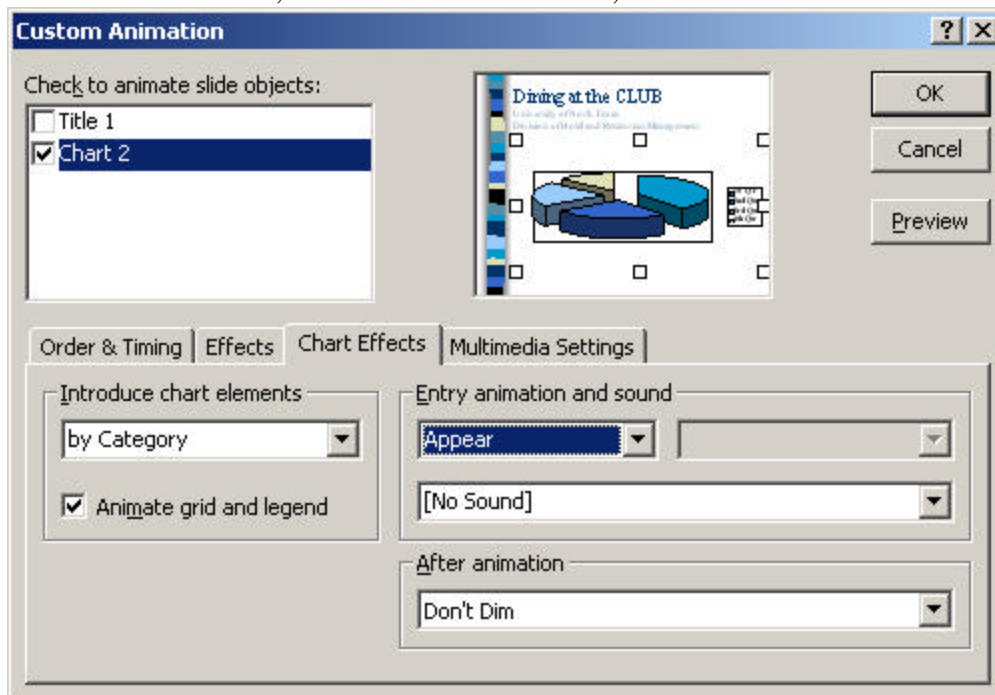


UNT Computing Center HelpDesk Support Services  
Information Sciences Building – Room 119  
UNT Box 305398 - Denton, TX 76203 940-565-2324  
Open Monday-Friday 8am-8pm, Saturday 9am-2pm, Sunday 5pm-10pm

## Creating a WOW Presentation in PowerPoint 2000

### I. Build Effect for Pie Chart

- Create the Pie Chart.
- Go to SLIDE SHOW, CUSTOM ANIMATION,



- Select Chart Effects.
- Select “by Category” under Introduce Chart Elements.
- Select the way you want the the category to enter the screen (i.e., box in, blinds horizontal, appear, dissolve).
- Select if you want sounds with each appearance.
- Select what to do after it has appeared – dim, don’t dim, hide after animation.